



SHARE YOUR RIDE

#BUILTFORGLORY

DEAN FAST FRONT BRAKE CABLE ROUTING

RIDLEY OWNERS MANUAL

TYPE: 7DE

LAST UPDATE: 09/10/2015

INDEX

0.	UPDATES.....	3
1.	WARNINGS.....	3
2.	TECHNICAL INFORMATION.....	3
2.1.	COMPATIBILITY	3
3.	PARTS AND TOOLS	4
3.1.	PARTS	4
3.2.	TOOLS	6
3.3.	TECHNICAL INFORMATION	6
4.	TORQUE SETTINGS.....	6
5.	SETUP AND INSTALLATION.....	7
5.1.	FRONT BRAKE CABLE ROUTING.....	7
5.1.1.	EXPANDER INSTALLATION AND ORIENTATION	8
5.1.3.	TOP CAP ORIENTATION.....	10
5.2.	FRONT BRAKE INSTALLATION	11
5.2.1.	OUTER BRAKE CABLE	12
5.2.2.	INNER BRAKE CABLE.....	13
5.2.3.	GUIDE PIPE	14
5.2.4.	BOLT AND PIPE HOLDER.....	15
5.1.5.	CABLE LOCK.....	16
5.1.6.	BRAKE PADS	16
5.3.	FRONT BRAKE ADJUSTMENT	17
6.	MAINTENANCE	18
7.	INFORMATION	18
7.1.	ADDITIONAL MANUALS	18
7.2.	WARRANTY	18
7.3.	MANUAL MODIFICATION	18

0. UPDATES

The development of frames, forks and components is a continuous running process. Therefore we strongly advise to check our website for new updates before reading this information sheet.

1. WARNINGS

!WARNING!

Bicycle riding can be, and often is, extremely dangerous. Your Dean fast was designed and manufactured using state of the art technology and materials. It meets and exceeds the applicable EN-standard. Nevertheless, the poor condition of many of our roads, your speed on impact, dangerous climatic conditions, your weight and your dexterity as a rider are just a few of factors which contribute to possible and even foreseeable impact energies well beyond your Dean fast capabilities. No handlebar, including your Dean fast, can withstand ALL such foreseeable impacts.

2. TECHNICAL INFORMATION

2.1. COMPATIBILITY

!!IMPORTANT!

The dean fast is designed EXCLUSIVELY for use with the dean fast fork and the 4ZA cirrus TT handlebar. Only use components such included in the Dean Fast and/or the 4ZA TT set to assemble the Dean fast frame, the Dean fast fork and the 4ZA Cirrus TT handlebar.

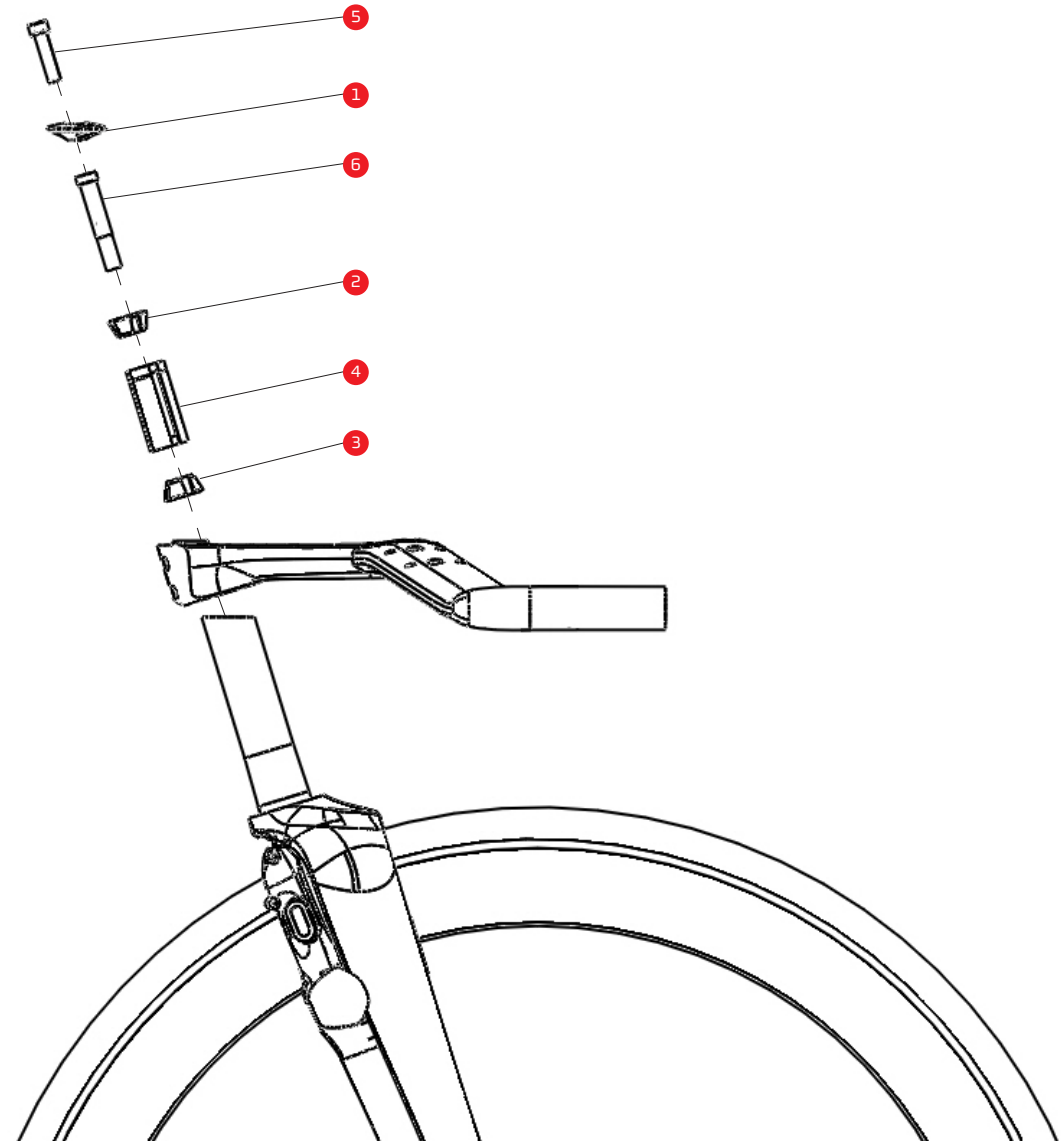
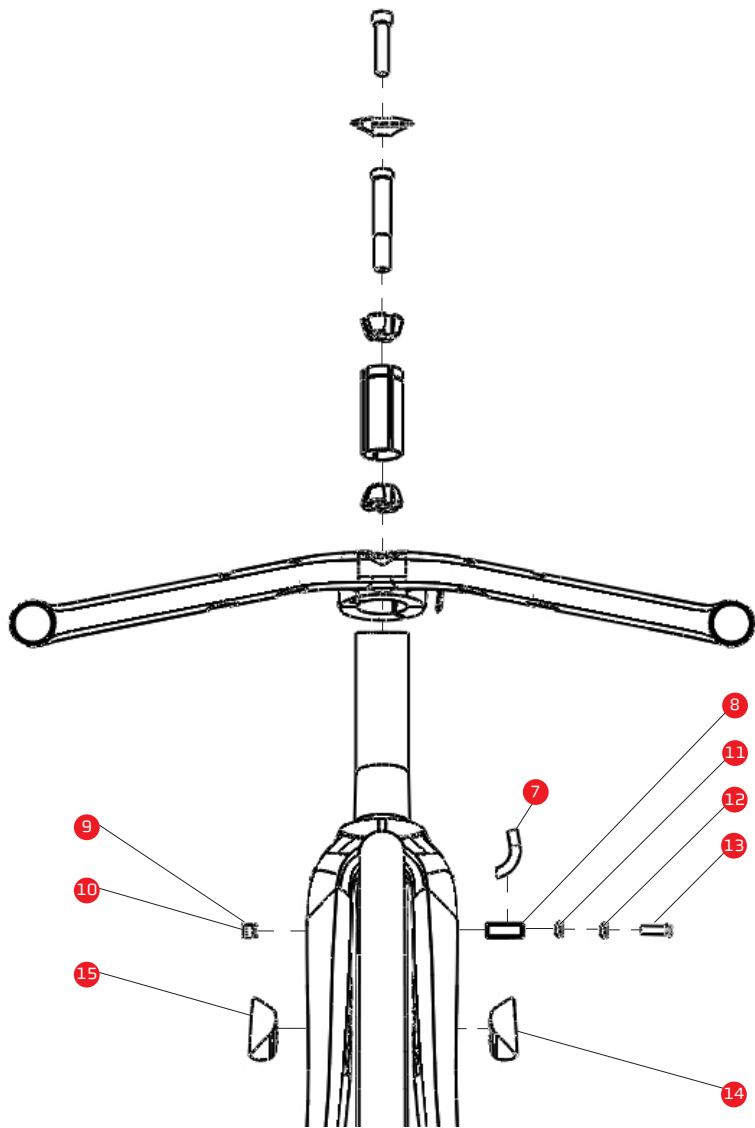
3. PARTS AND TOOLS

3.1. PARTS

NO.*	PART	PART CODE**	QUANTITY
1	EXPANDER (TOP CAP)	FPLCRN4ZA004	1
2	EXPANDER (UPPER CONICAL PART)	FPLCRN4ZA004	1
3	EXPANDER (LOWER CONICAL PART)	FPLCRN4ZA004	1
4	EXPANDER (INNER SLEEVE)	FPLCRN4ZA004	1
4	EXPANDER (OUTER SLEEVE)	FPLCRN4ZA004	1
5	EXPANDER (TOP CAP BOLT)	FPLCRN4ZA004	1
6	EXPANDER (EXPANDER BOLT)	FPLCRN4ZA004	1
7	GUIDE PIPE	CABBRAJAG039	1
8	PIPE HOLDER	BRPIBS4ZA007	1
9	CABLE LOCK (CABLE CLAMP)	BRPIBS4ZA007	1
10	CABLE LOCK (SCREW)	BRPIBS4ZA007	1
11	NUT	BRPIBS4ZA007	1
12	WASHER	BRPIBS4ZA007	2
13	BOLT	BRPIBS4ZA007	1
14	FOAM (LEFT)	FOPFOA4ZA006	1
15	FOAM (RIGHT)	FOPFOA4ZA005	1

*NO: PART INDICATED ON PAGE 5.

** PART CODE: PARTS THAT SHARE THE SAME PART CODE ARE DELIVERED AS A SET



3.2. TOOLS

- 2, 5, 6 mm Hex wrenches
- Torque wrench
- 400 grit sandpaper
- Cable guide
- Friction paste
- Grease or titanium anti-seize for titanium bolts
- Isopropyl alcohol

3.3. TECHNICAL INFORMATION

NO.*	COMPONENT	INFO
1	TOP CAP	ANGLED 73° AND PROVIDED WITH A BRAKE CABLE SLOT
11	NUT	FIXES SCREW AGAINST PIPE HOLDER
12	WASHER	SEPARATES SCREW AND LEFT BRAKE ARM
13	SCREW	FIXES LEFT BRAKE ARM TO PIPE HOLDER

4. TORQUE SETTINGS

!!IMPORTANT!

Please make sure to regularly inspect bolt torque. You should never exceed the advised torque settings, this can lead to damage, cracks or fatigue of the 4ZA TT kit resulting into hazardous riding conditions. Likewise you should never ride with your 4ZA TT kit loose.

NO.*	COMPONENT	TORQUE (NM)
5	TOP CAP BOLT	2
6	EXPANDER BOLT	13

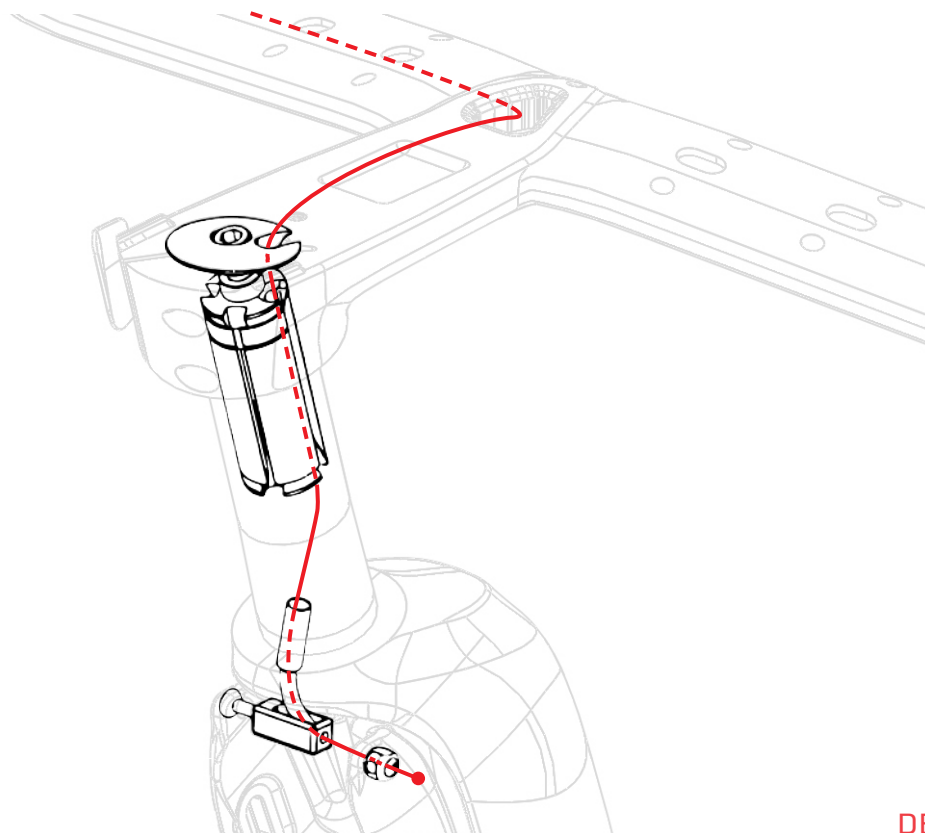
*NO: PART INDICATED ON PAGE 5.

5. SETUP AND INSTALLATION

To ensure fluent front brake cable routing it is advised to read this manual through before installation. A couple of remarks are given concerning part orientation, this in order to prevent damage to the front brake cable and/or other components. Make sure to install the headset before proceeding installation of the front brake cable routing.

5.1. FRONT BRAKE CABLE ROUTING

The front brake cable is routed directly through the top cap and the expander. Front brake cable routing should be done after installing the entire 4ZA TT kit (except for the top cover) and the expander.



5.1.1 EXPANDER INSTALLATION AND ORIENTATION

Several parts of the expander are adapted to fit the front brake cable as indicated on page 9. Make sure to pay attention to these adaptations during installation.

NO.*	COMPONENT	ADAPTATION
2	UPPER CONICAL PART	ROUNDED RECESS
3	LOWER CONICAL PART	ROUNDED RECESS
4	INNER SLEEVE	ENLARGED RECESS
4	OUTER SLEEVE	/
6	EXPANDER BOLT	/

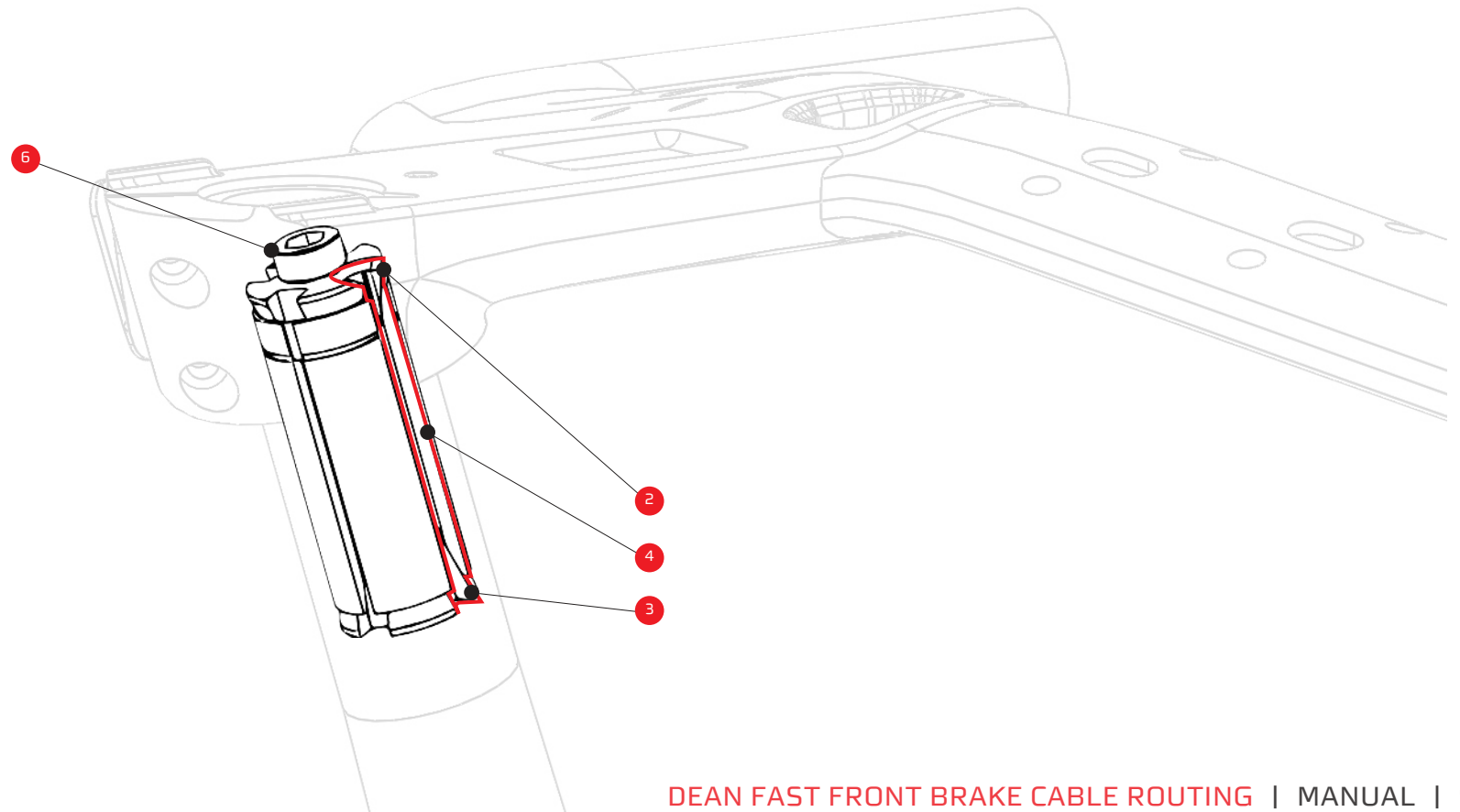
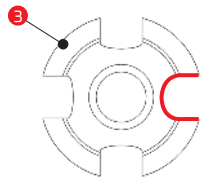
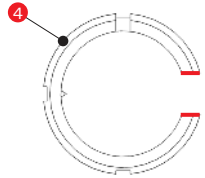
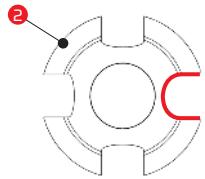
Installation of the expander can be achieved by the following two steps:

Step 1: Expander subassembly, assemble the upper conical part, the lower conical part, the inner sleeve, the outer sleeve, and the expander bolt. Make sure to align all components as indicated on page 9. Slightly tighten the expander bolt during subassembly.

Step 2: Install the expander subassembly in the steerer. position the expander about 5 mm below the top of the steerer tube. Make sure to orient the expander to match the top cap orientation as indicated on page 10. Tighten the expander bolt to 13 Nm

!!IMPORTANT!

Make sure to align the upper and lower conical part and the inner sleeve while mounting the expander. insert a screw driver in one of the corresponding recesses in each of the three parts to help align the components while fixing the expander in the steerer tube. Orient the expander in the fork to match the orientation of the top cap (5.2. Top cap orientation). Route the front brake cable through the provided recesses after fixating the expander and the top cap.

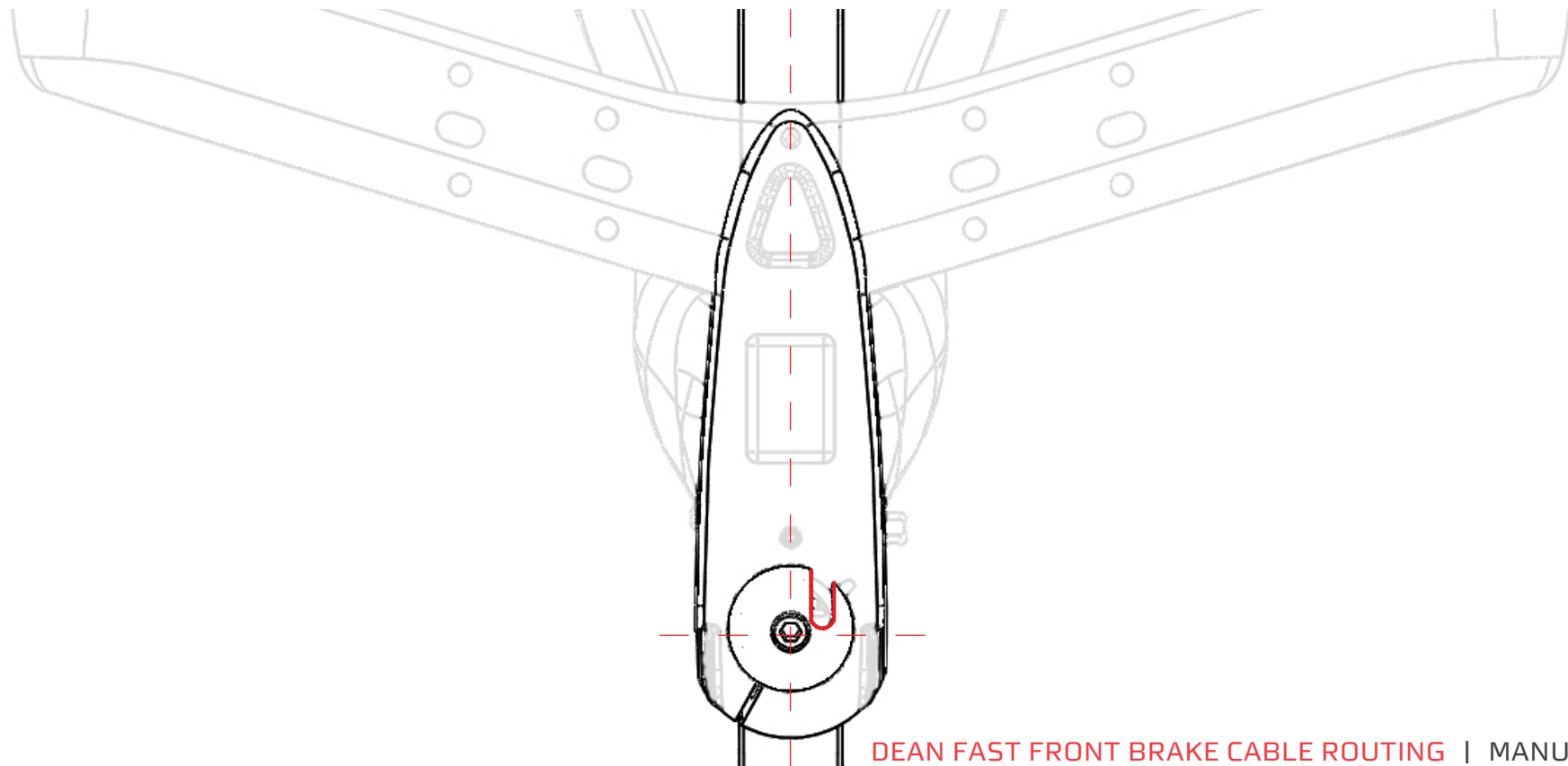


5.1.2 TOP CAP ORIENTATION

The top cap is designed to fit the 73° angle of the 4ZA TT cirrus handlebar. Therefore it should be oriented appropriately relative to the handlebar and the dean fast fork. Use the top cap bolt to fix the top cap on to the expander.

!!IMPORTANT!

Make sure to position the top cap with the brake cable slot facing the same direction as the 4ZA TT handlebar and the dean Fast fork.



5.2. FRONT BRAKE INSTALLATION

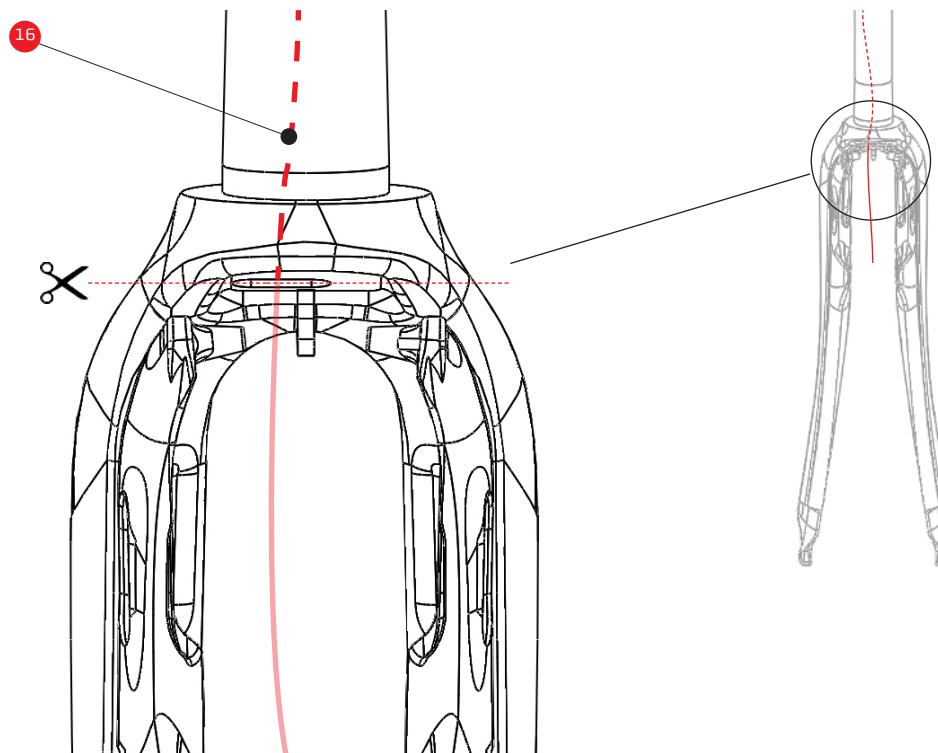
The integrated dean fast front brake requires special attention during installation due to the unique, patented design. Therefore it is advised to follow the steps on the following pages meticulously during assembly and disassembly.

These are the parts needed to assemble the front brake:

NO.*	PART	PART CODE	QUANTITY
7	GUIDE PIPE	CABBRAJAG039	1
8	PIPE HOLDER	BRPIBS4ZA007	1
9	CABLE LOCK (CABLE CLAMP)	BRPIBS4ZA007	1
10	CABLE LOCK (SCREW)	BRPIBS4ZA007	1
11	NUT	BRPIBS4ZA007	1
12	WASHER	BRPIBS4ZA007	2
13	BOLT	BRPIBS4ZA007	1
16	OUTER BRAKE CABLE	/	1
17	INNER BRAKE CABLE	/	1

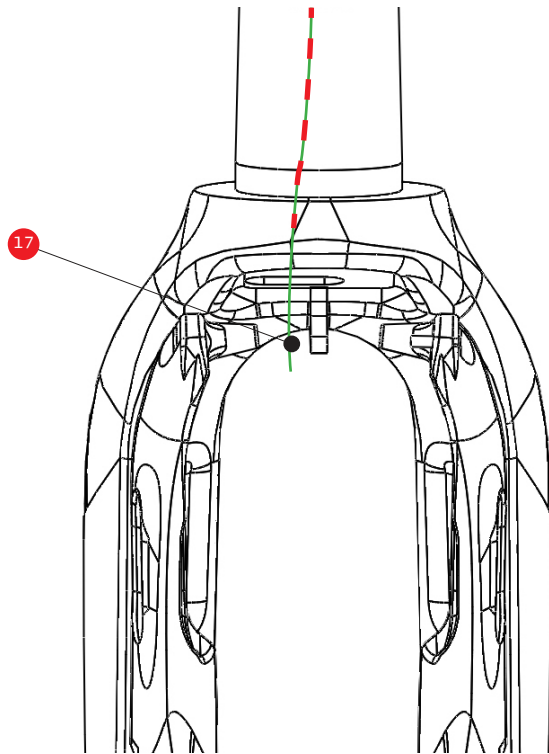
5.2.1. OUTER BRAKE CABLE

Cut the outer brake cable (16) to size before installing the brakes. To determine the appropriate length first route the brake cable through the Cirrus TT kit basebar. Route the front brake cable through the expander and put it through the steerer as far as possible. Cut the cable guide at the exit point of the steerer as indicated on the image below. Once the tension is released from the outer brake cable the cable will automatically move up a few mm inside the steerer.



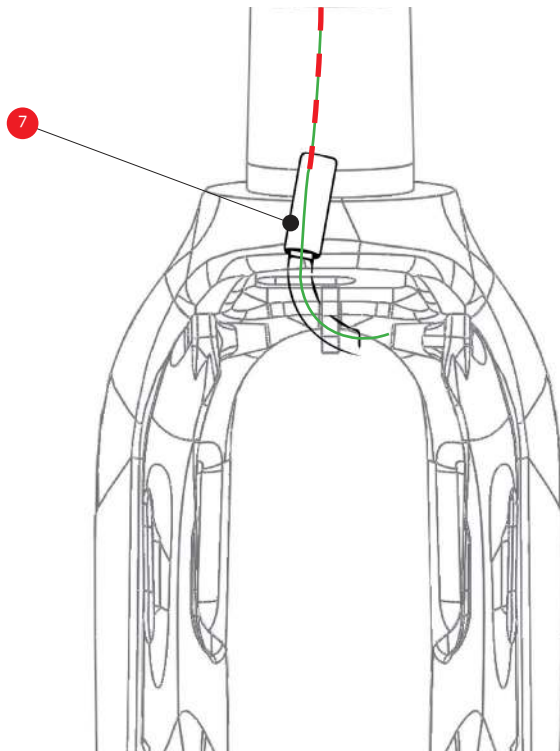
5.2.2. INNER BRAKE CABLE

Route the inner brake cable (17) through the outer brake cable. The inner brake cable should move freely through the outer cable.



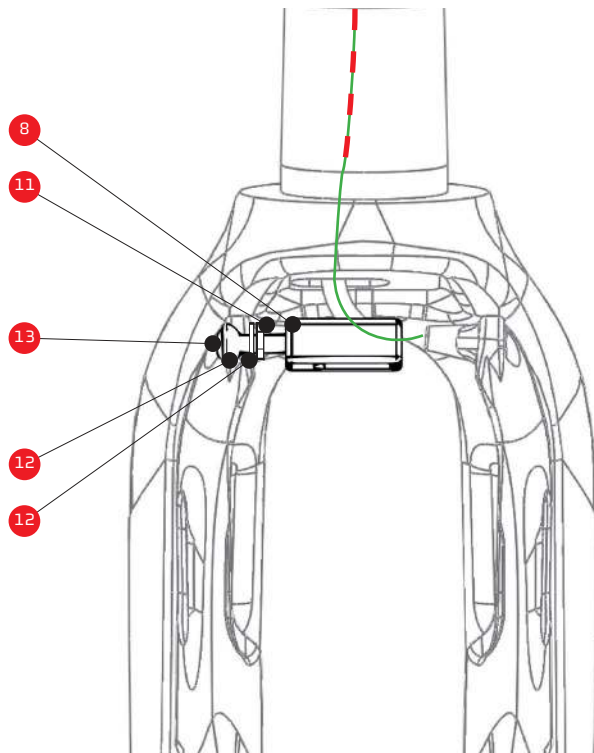
5.2.3. GUIDE PIPE

Route the inner brake cable through the guide pipe (7). Slide the guide pipe over the outer brake cable. Make sure the guide pipe's plastic inner guide prevents the inner brake cable from coming in contact with the outer brake cable.



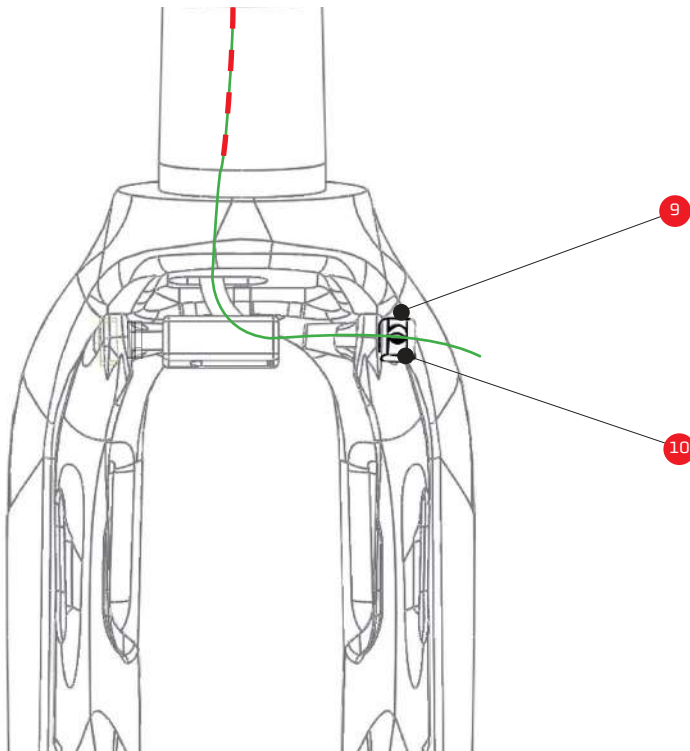
5.2.4. BOLT AND PIPE HOLDER

Slide the conical washer (12) over the bolt (13). Place the nut (11) through the left brake arm and fix it using the flat washer (12) and the nut. screw the pipe holder (8) on the bolt. guide the guide pipe through the hole of the pipe holder. Make sure the plastic inner guide of the guidepipe sticks through the pipe holder.



5.2.5. CABLE LOCK

Route the inner brake cable through the right brake arm. slide the cable clamp (9) over the inner brake cable. Tighten the screw (10) inside the cable clamp using a 2 mm allen key.



5.2.6. BRAKE PADS

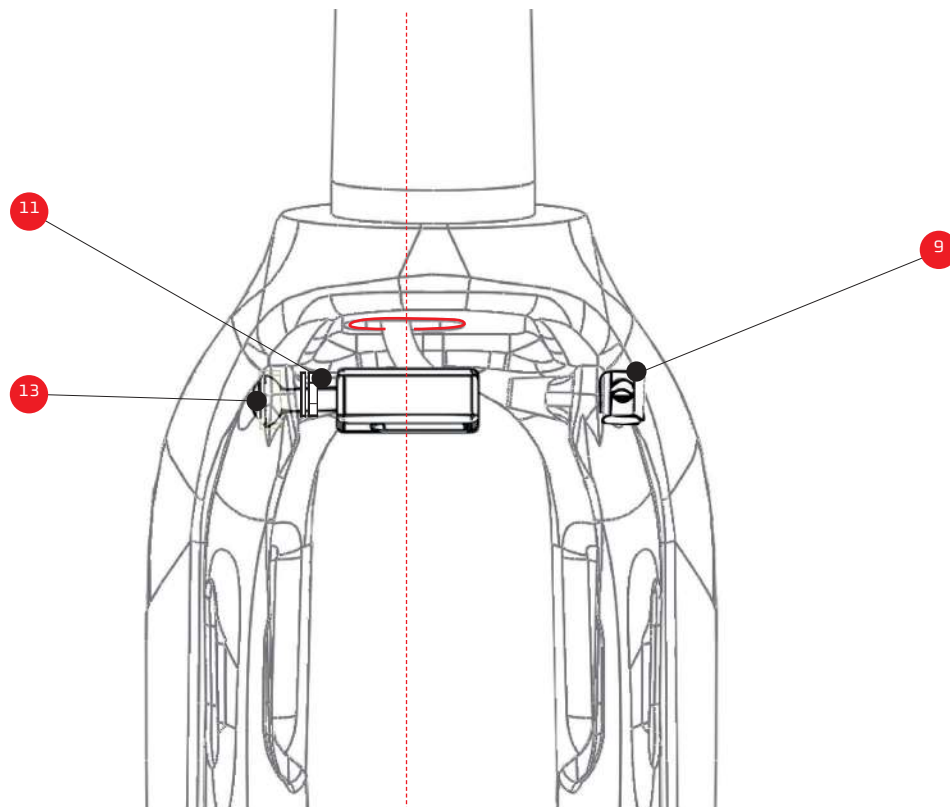
Mount the brake pads as you would on a regular bike. Use washers to alter the distance between the brake pads and the wheel brake surface.

5.2. FRONT BRAKE ADJUSTMENT

To achieve a constant and high brake performance it is key to position the pipe holder in the center of the slot at the bottom of steerer tube. This can be achieved by altering the distance between either the left or right brake arm. Often it is necessary to alter both distances in order to achieve the desired result.

Altering the distance between the left brake arm and the pipe holder can be achieved by fastening or loosening the bolt (13) connecting both components. Loosen the nut (11) before fastening or loosening the bolt. Fasten the bolt to move the pipe holder closer to the left brake arm, loosen the bolt to move the pipe holder further from the left brake arm.

altering the distance between the right brake arm and the pipe holder can be achieved by altering the inner brake cable tension. Pull the inner cable further through the cable clamp (9) to move the pipe holder closer to the right brake arm. Loosen tension on the inner brake cable to move the pipe holder further from the right brake arm.



6. MAINTENANCE

!WARNING!

Make sure you submit your Ridley components including, but not limited to, your Dean Fast cockpit - to regular check-ups by your mechanic. It has been our experience that a large majority of accidents could have easily been avoided by a preliminary examination by a professional mechanic. Clean your Ridley cockpit kit using only water and mild soap. Regularly inspect bolt torque. You should never ride with your bike with any loose component. regularly inspect components for signs of damage or fatigue. Always inspect components for damage after any crash. Signs of damage or fatigue include, but are not limited to cracks, dents, deformation, discoloration, deep scratches, or audible creaking. Discontinue use and replace any parts that show signs of damage or fatigue. Do not attempt to repair parts. If you are unsure of the integrity of your Dean fast bike, have it inspected by your ridley dealer.

7. INFORMATION

7.1. ADDITIONAL MANUALS

Consult the 4ZA Cirrus Pro Fast aero handlebar manual for more extensive installation information of the 4ZA TT handlebar. For more information concerning the Dean Fast or the Ridley integrated brake system consult the Dean Fast frame passport.

7.2. WARRANTY

Contact your local Ridley dealer for warranty questions.

7.3. MANUAL MODIFICATION

Please note: Ridley reserves the right to modify this owner's manual. Such possible modifications will be listed on ridley's internet site (<http://www.ridley-bikes.com>) and/or are available by contacting us at Ridley and/or your authorized Ridley retailer. Make sure you periodically check any one of these three sources of information for possible modifications to this owner's manual.

#BUILTFORGLORY